

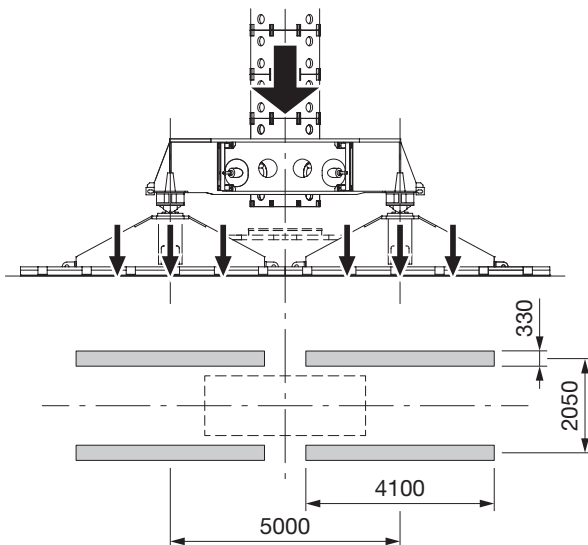
Dimensions are in millimeters.  
The content in this document is mentioned for reference use only. Values may differ from current data. Always contact Mammoet for current project calculations.

**SPECIFICATIONS**

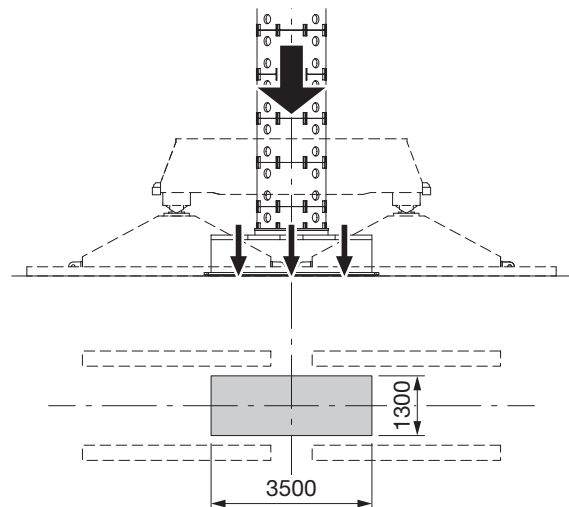
Capacity	2400 t
Working pressure of the cylinder	400 bar
Stroke	600 mm
Length	10000 mm
Width	2950 mm
Height	2925 mm
Weight, one unit without cans	51535 kg
Weight, main components	
Skid shoe	4600 × 4 = 18400 kg
Skid track	1270 × 4 = 5080 kg
Column support with bearing and manipulator	11450 kg
Jack frame	12700 kg
Lateral connection frame	165 × 4 = 660 kg
Transverse beam	1065 × 2 = 2130 kg
Can	1975 kg
Half can	1025 kg
Adapter cone H=430	4083 kg
Adapter cone H=880	5031 kg
Power pack (for two jacking units)	4000 kg
Lifting height	Speak to Mammoet Engineering
Skid tracks	The JS 2400 uses skid tracks of the skidding system heavy 600 t.

**Jack mode**

In jack mode, the load is on the skid shoes. The maximum load bearing surface of the four skid shoes is 5.41 m<sup>2</sup>. The maximum load on each column in jack mode is 2400 t. The maximum expected load on each skid shoe is 600 t. This includes the weight of the cans, jacking frame, cross beams and skid shoes.


**Pack mode**

In pack mode, the load is on the column support. The maximum load bearing surface is 4.55 m<sup>2</sup>. The maximum load on the column support is 2750 t. This includes the weight of the cans and column support.



Dimensions are in millimeters, t = metric tons.  
The content in this document is mentioned for reference use only. Values may differ from current data. Always contact Mammoet for current project calculations.