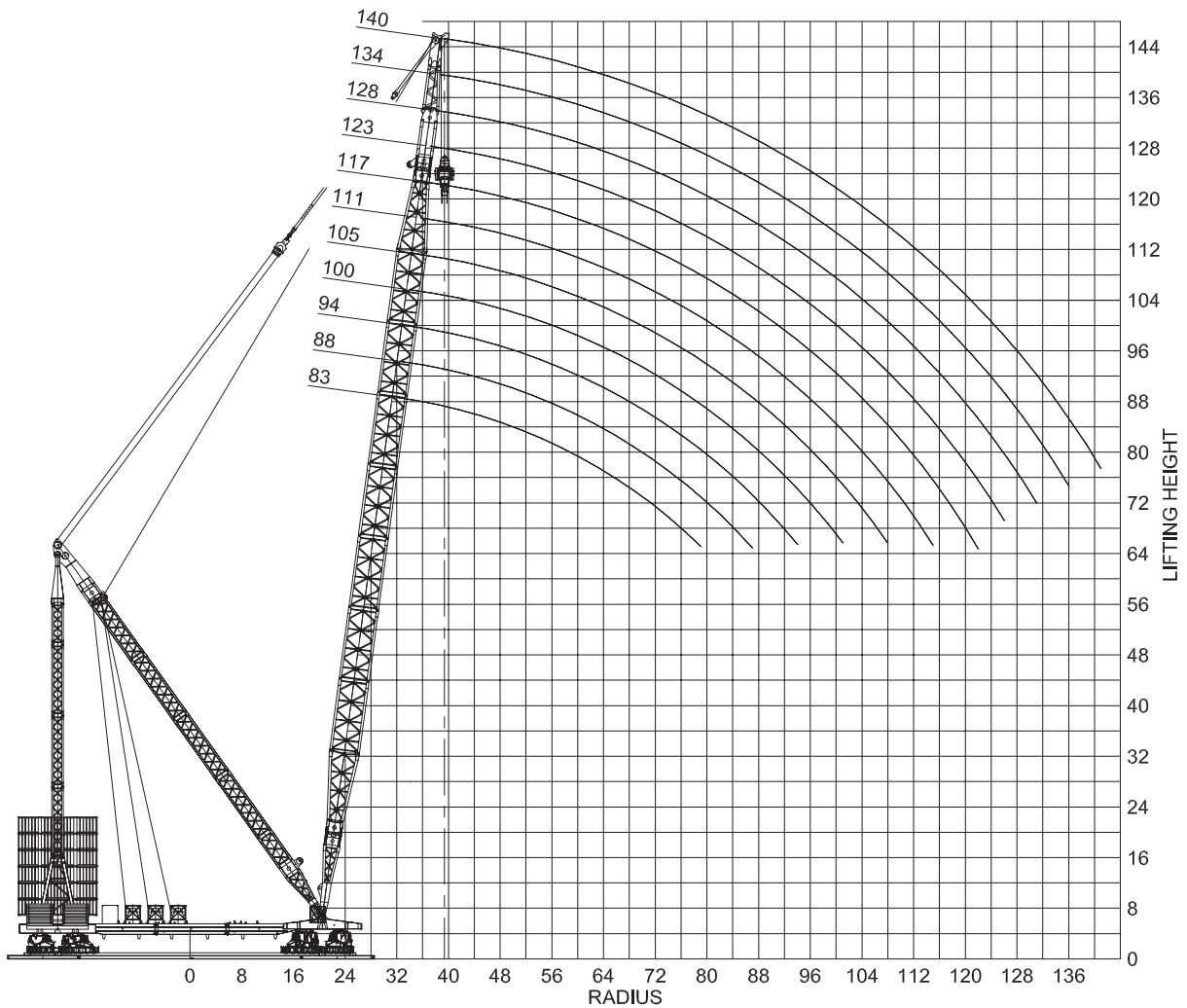


Dimensions are in millimeters.
The content in this document is mentioned for reference use only. Values may differ from current data. Always contact Mammoet for current project calculations.



Dimensions are in meters.
 The content in this document is mentioned for reference use only. Values may differ from current data. Always contact Mammoet for current project calculations.

Main boom with superlift

- Ring diameter: 39.4 + 49.5 m
- Mast head: 2x
- Ballast: 3500 - 3000 t

Ballast (t)	Boom length (m)	Radius (m)																															
		32	34	38	42	46	50	54	58	62	66	70	74	78	82	86	90	94	98	102	106	110	114	118	122	132	141						
3000	83	3200	3200	3200	3200	3200	3200	3200	2901	2610	2368	2136	1910	1712																			
	88		3200	3200	3200	3200	3200	3200	2894	2603	2361	2155	1979	1807	1628	1467																	
	94			3200	3200	3200	3200	3200	2880	2590	2348	2142	1966	1813	1679	1543	1396	1262															
	100				3200	3200	3200	3200	2872	2581	2339	2134	1958	1805	1671	1553	1448	1333	1209														
	105					3200	3200	3200	2865	2574	2332	2127	1952	1798	1664	1547	1441	1345	1255	1160	1052												
	111						3200	3200	3068	2855	2565	2323	2118	1942	1790	1656	1538	1433	1334	1245	1165	1092	1004	908									
	117							3200	3050	2865	2699	2556	2314	2109	1933	1781	1648	1529	1424	1325	1236	1155	1083	1017	956	869	783						
	123								3200	3076	2878	2700	2539	2391	2304	2099	1924	1771	1638	1520	1415	1317	1227	1146	1074	1007	947	892	800				
	128									3200	3101	2891	2704	2536	2382	2243	2175	2077	1916	1764	1630	1513	1408	1309	1219	1139	1066	999	939	859	777		
	134										2921	2712	2527	2361	2211	2075	1949	1922	1808	1702	1602	1503	1398	1299	1210	1129	1056	983	901	821	743	563	
140											2725	2524	2333	2189	2045	1915	1795	1737	1657	1556	1461	1372	1288	1209	1134	1062	992	927	857	783	711	544	405
3500	83	3200	3200	3200	3200	3200	3200	3077	2707	2398	2136	1910	1712																				
	88		3200	3200	3200	3200	3200	3200	2839	2517	2245	2011	1807	1628	1467																		
	94			3200	3200	3200	3200	3200	2962	2627	2344	2102	1892	1707	1543	1396	1262																
	100				3200	3200	3200	3200	2969	2698	2445	2194	1977	1787	1619	1469	1333	1209															
	105					3200	3200	3200	3130	2965	2691	2458	2258	2048	1862	1692	1537	1400	1275	1160	1052												
	111						3200	3068	2896	2855	2680	2449	2249	2076	1893	1731	1574	1442	1321	1209	1104	1004	908										
	117							3200	3050	2865	2699	2582	2512	2372	2240	2067	1914	1755	1612	1472	1354	1245	1143	1047	957	869	783						
	123								3200	3200	3076	2878	2700	2539	2391	2355	2227	2102	1985	1875	1769	1629	1491	1377	1271	1172	1080	986	892	800			
	128									3200	3101	2891	2704	2536	2382	2243	2176	2077	1959	1848	1744	1646	1552	1437	1329	1226	1128	1035	945	859	777		
	134										2921	2712	2527	2361	2211	2075	1949	1922	1808	1702	1602	1508	1420	1336	1256	1162	1071	983	901	821	743	563	
140											2725	2524	2333	2189	2045	1915	1795	1738	1657	1556	1461	1372	1288	1209	1134	1062	992	927	857	783	711	544	405

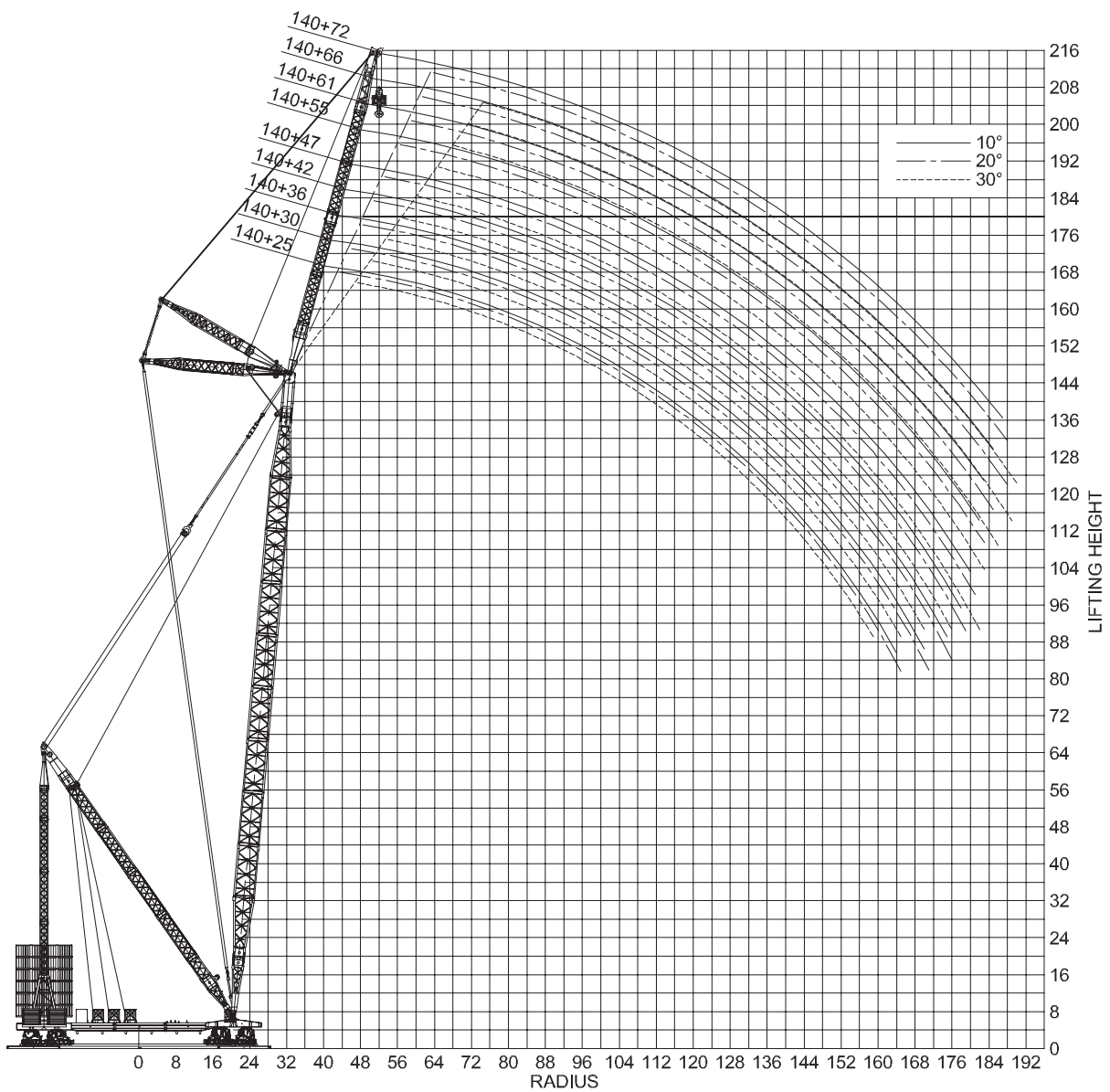
Main boom with superlift

- Ring diameter: 39.4 + 49.5 m
- Mast head: 1x
- Ballast: 3500 - 3000 t

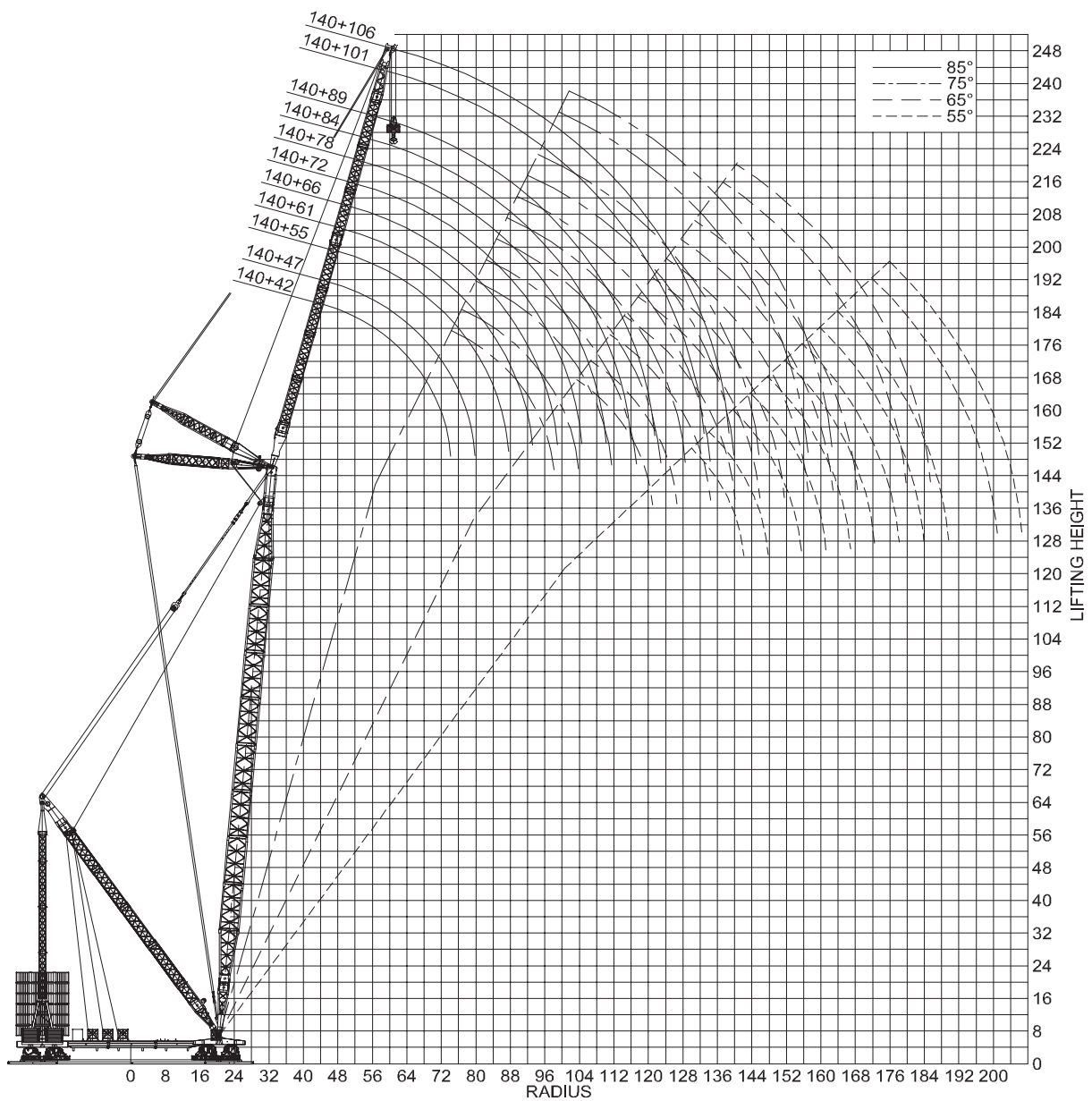
Ballast (t)	Boom length (m)	Radius (m)																																	
		32	34	38	42	46	50	54	58	62	66	70	74	78	82	86	90	94	98	102	106	108													
3000	83	1600	1600	1600	1600	1600	1600	1600	1600	1600	1600	1600	1600	1600	1600	1600	1600	1600	1600	1600	1600	1600	1600	1600	1600	1600	1600	1600	1600	1600	1600	1600	1600		
	88		1600	1600	1600	1600	1600	1600	1600	1600	1600	1600	1600	1600	1600	1600	1600	1600	1550	1395	1252	1118	991												
	94			1600	1600	1600	1600	1600	1600	1600	1600	1600	1600	1600	1600	1600	1600	1600	1550	1395	1252	1118	991												
	100				1600	1600	1600	1600	1600	1600	1600	1600	1600	1600	1600	1600	1600	1600	1509	1365	1233	1109	993	883											
	105					1600	1600	1600	1600	1600	1600	1600	1600	1600	1600	1600	1600	1600	1472	1338	1214	1098	991	889	793	701	658								
3500	83	1600	1600	1600	1600	1600	1600	1600	1600	1600	1600	1600	1600	1600	1600	1600	1600	1600	1600	1600	1600	1600	1600	1600	1600	1600	1600	1600	1600	1600	1600	1600	1600	1600	
	88		1600	1600	1600	1600	1600	1600	1600	1600	1600	1600	1600	1600	1600	1600	1600	1600	1600	1453	1293														
	94			1600	1600	1600	1600	1600	1600	1600	1600	1600	1600	1600	1600	1600	1600	1600	1550	1395	1252	1118	991												
	100				1600	1600	1600	1600	1600	1600	1600	1600	1600	1600	1600	1600	1600	1600	1509	1365	1233	1109	993	883											
	105					1600	1600	1600	1600	1600	1600	1600	1600	1600	1600	1600	1600	1600	1472	1338	1214	1098	991	889	793	701	658								

t = metric tons.

The content in this document is mentioned for reference use only. Values may differ from current data. Always contact Mammoet for current project calculations.



Dimensions are in meters.
 The content in this document is mentioned for reference use only. Values may differ from current data. Always contact Mammoet for current project calculations.



Dimensions are in meters.
 The content in this document is mentioned for reference use only. Values may differ from current data. Always contact Mammoet for current project calculations.

Main boom with luffing jib and superlift

- Ring diameter: 39.4 + 49.5 m
- Mast head: 1x
- Ballast: 3500 - 3000 t
- Boom angle: 85°, 82.5°, 80° ... 55°

Boom length (t)	Jib length (m)	Radius (m)																									
		40	42	46	50	54	58	62	66	70	74	78	82	86	90	94	98	102	106	110	114	118	122	132			
83	42	1600	1600	1600	1600	1600	1600	1534	1197																		
	47		1600	1600	1600	1600	1600	1600	1498	1212	908																
	55			1600	1600	1600	1600	1600	1528	1364	1181	975	737														
	61				1600	1600	1600	1600	1522	1402	1335	1234	1084	925	746												
	66					1600	1600	1600	1553	1424	1307	1207	1151	1073	997	873	726	532									
	72						1534	1474	1408	1332	1220	1124	1041	995	929	872	816	698	561								
	78							1484	1408	1323	1221	1127	1043	965	896	857	801	752	709	666	554						
	84								1336	1243	1142	1046	968	897	833	777	726	703	671	632	597	567	538	428			
	89									1349	1327	1304	1283	1262	1239	1163	1055	961	880	802	731	664	600	517	429		
	106										1120	1095	1068	1041	1011	978	936	879	817	762	711	683	640	589	541	494	449
88	42		1600	1600	1600	1600	1600	1580	1238																		
	47			1600	1600	1600	1600	1600	1522	1249	952																
	55				1600	1600	1600	1600	1544	1386	1197	1023	790														
	61					1600	1600	1600	1600	1541	1418	1338	1254	1098	954	787											
	66						1600	1600	1558	1441	1322	1220	1153	1083	1009	887	762	580									
	72							1600	1565	1483	1349	1235	1137	1052	1005	938	879	828	727	593							
	78								1489	1415	1337	1234	1140	1055	975	905	866	809	758	714	677	582					
	84									1254	1152	1060	979	907	842	785	733	710	677	637	602	571	546	455			
	89										1340	1318	1296	1277	1253	1235	1178	1069	972	891	812	740	672	608	542	452	
	94	42		1600	1600	1600	1600	1600	1600	1280	905																
47				1600	1600	1600	1600	1600	1547	1285	993																
55					1600	1600	1600	1600	1600	1531	1402	1211	1039	839													
61						1600	1600	1600	1600	1560	1434	1352	1268	1110	964	820											
66							1600	1600	1600	1459	1337	1233	1165	1094	1023	900	780	622									
72								1600	1570	1497	1366	1249	1149	1063	1006	947	887	835	736	625							
78									1491	1421	1346	1248	1152	1067	985	914	866	816	765	720	682	603	464				
84										1263	1164	1072	989	916	851	792	740	705	683	643	607	575	549	481			
100		42		1600	1600	1600	1600	1600	1600	1322	971																
		47			1600	1600	1600	1600	1600	1579	1323	1032															
	55				1600	1600	1600	1600	1551	1423	1232	1059	881														
	61					1600	1600	1600	1579	1450	1341	1280	1127	983	841												
	66						1600	1600	1600	1478	1353	1247	1155	1104	1033	909	790	659									
	72							1600	1568	1505	1383	1264	1162	1075	1016	955	894	842	744	639							
	78								1488	1428	1355	1261	1165	1078	996	923	875	824	771	726	687	611	497				
	84									1273	1177	1084	1000	926	860	800	747	711	689	648	612	579	553	500			
	105	42		1600	1600	1600	1600	1600	1600	1365	1023																
		47			1600	1600	1600	1600	1600	1600	1361	1070															
55					1600	1600	1600	1600	1567	1458	1262	1086	909														
61						1600	1600	1600	1598	1466	1351	1295	1147	1001	859	669											
66							1600	1600	1600	1496	1369	1260	1167	1115	1042	923	805	678									
72								1600	1563	1510	1400	1279	1175	1086	1008	965	902	849	753	651							
78									1434	1363	1274	1178	1089	1007	933	868	831	778	732	692	617	518					
84										1295	1190	1095	1011	935	868	808	755	706	695	654	617	584	556	509			
111		42		1600	1600	1600	1600	1600	1600	1408	1070																
		47			1600	1600	1600	1600	1600	1600	1395	1107															
	55				1600	1600	1600	1600	1584	1478	1280	1103	930														
	61					1600	1600	1600	1600	1485	1371	1307	1162	1015	875	711											
	66						1600	1600	1600	1515	1385	1274	1179	1125	1053	935	818	695									
	72							1600	1557	1506	1418	1295	1189	1097	1018	974	910	856	764	663	527						
	78								1504	1392	1287	1191	1101	1018	942	876	839	785	738	697	630	534					
	84									1308	1202	1107	1021	945	877	816	762	713	702	659	622	588	560	518			

t = metric tons.

The content in this document is mentioned for reference use only. Values may differ from current data. Always contact Mammoet for current project calculations.

Boom length (t)	Jib length (m)	Radius (m)																										
		40	42	46	50	54	58	62	66	70	74	78	82	86	90	94	98	102	106	110	114	118	122	132				
117	42			1600	1600	1600	1600	1600	1453	1115																		
	47			1600	1600	1600	1600	1600	1600	1418	1143																	
	55			1600	1600	1600	1600	1600	1600	1490	1298	1121	950															
	61				1600	1600	1600	1600	1503	1386	1321	1178	1030	891	736													
	66					1600	1600	1600	1534	1404	1290	1193	1138	1062	948	831	710											
	72						1600	1600	1575	1436	1310	1202	1109	1029	983	918	863	779	679	555								
	78							1515	1405	1300	1204	1113	1029	952	885	847	792	744	702	641	548							
	84								1319	1214	1118	1032	955	886	825	769	720	708	665	627	593	564	528	418				
123	42			1600	1600	1600	1600	1600	1498	1158																		
	47			1600	1600	1600	1600	1600	1531	1419	1180	856																
	55				1600	1600	1600	1600	1519	1415	1317	1142	971	728														
	61					1600	1600	1600	1600	1507	1401	1318	1197	1048	907	757												
	66						1600	1600	1600	1555	1419	1304	1205	1150	1072	968	850	730										
	72							1600	1586	1453	1326	1216	1121	1040	993	927	870	791	691	575								
	78								1514	1416	1312	1216	1125	1040	962	893	855	799	750	708	651	560						
	84									1330	1225	1129	1043	965	895	833	777	726	715	671	632	597	568	544	450			
128	42			1600	1600	1600	1600	1600	1549	1426	1201																	
	47			1600	1600	1600	1600	1600	1550	1432	1324	1218	909															
	55				1600	1600	1600	1543	1424	1321	1228	1143	994	784														
	61					1600	1600	1600	1541	1425	1320	1230	1147	1072	932	785												
	66						1600	1600	1600	1484	1414	1318	1219	1146	1072	985	866	747										
	72							1600	1565	1472	1342	1231	1135	1051	1004	936	878	805	705	594								
	78								1502	1428	1325	1229	1137	1052	972	902	863	807	757	713	663	574						
	84									1341	1238	1142	1054	976	905	842	785	734	710	677	638	602	572	548	457			
	89										1253	1235	1216	1197	1152	1100	1046	989	926	869	805	728	658	591	526	453		
	106											1034	1015	994	965	932	898	863	825	788	743	693	663	618	575	538	490	372
134	42			1600	1600	1600	1591	1462	1345	1239																		
	47			1600	1600	1600	1588	1461	1349	1247	1156	954																
	55				1600	1600	1567	1445	1338	1242	1154	1074	1002	826														
	61					1600	1600	1554	1436	1331	1238	1154	1076	1006	942	812												
	66						1600	1536	1421	1319	1229	1147	1074	1004	941	884	770	623										
	72							1594	1500	1405	1306	1217	1138	1061	1002	940	883	827	726	617								
	78								1492	1435	1336	1240	1149	1063	982	911	872	814	763	718	680	593						
	84									1247	1152	1064	985	914	850	792	740	716	683	643	607	576	550	479				
	89										1327	1267	1207	1149	1093	1035	974	918	865	822	778	736	669	601	536	465		
	101											1117	1100	1065	1020	977	935	894	848	803	761	724	679	640	583	528	476	325
106												1025	1007	985	955	924	890	854	817	778	739	692	661	613	571	541	495	377
140	42			1600	1600	1600	1485	1367	1259	1157	905																	
	47			1600	1600	1600	1479	1361	1259	1166	1083	996																
	55				1600	1595	1461	1346	1244	1155	1076	1003	937	864														
	61					1600	1583	1453	1339	1239	1150	1073	1002	938	879	824												
	66						1566	1438	1327	1229	1142	1065	997	933	876	823	774	646										
	72							1522	1424	1314	1218	1133	1057	989	928	872	820	773	729	631								
	78								1465	1378	1296	1205	1121	1047	980	919	866	815	768	724	685	604	481					
	84									1256	1162	1074	995	923	859	799	747	711	689	648	612	580	554	482				
	89										1277	1213	1151	1091	1028	963	904	851	802	759	717	679	643	609	543	464		
	101											1104	1066	1019	973	927	884	833	786	743	703	667	632	600	570	534	481	329
106												1014	996	972	938	897	857	819	777	734	695	659	626	594	565	537	500	382

t = metric tons.

The content in this document is mentioned for reference use only. Values may differ from current data. Always contact Mammoet for current project calculations.