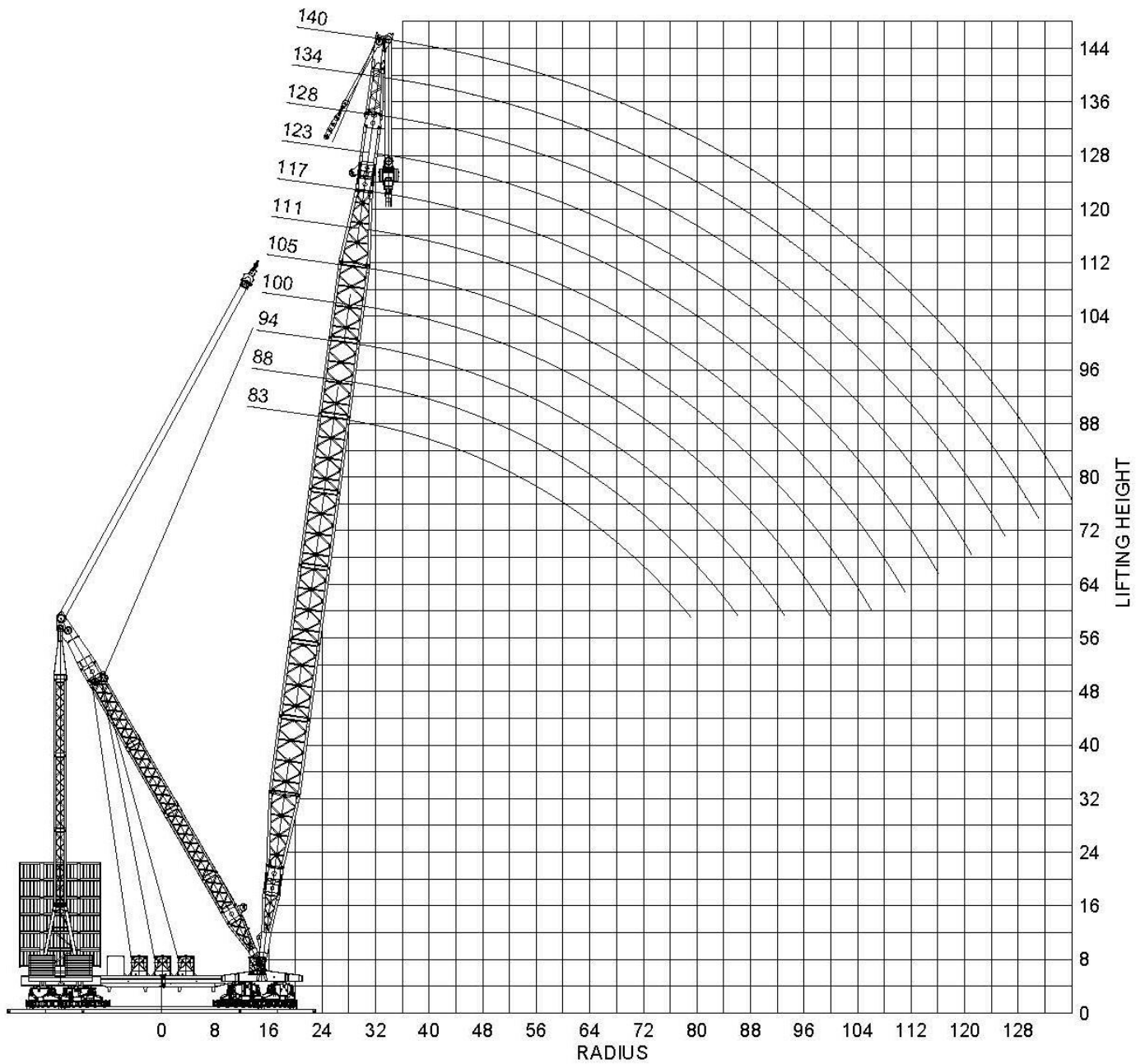


Dimensions are in millimetres. The content in this document is mentioned for reference use only. Values may differ from current data. All chart lines are combined jib angles. For detailed information please contact Mammoet.



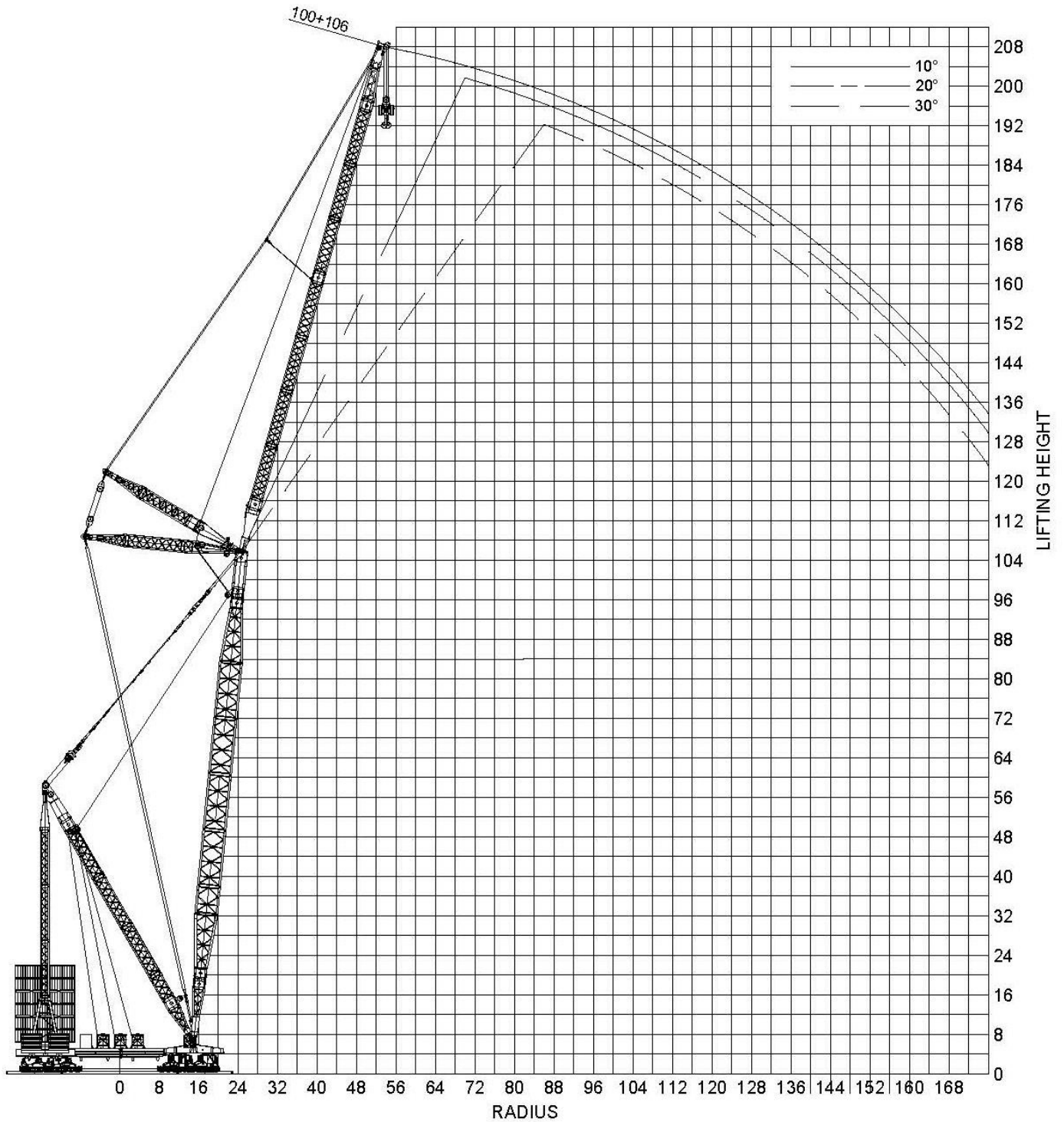
Dimensions are in millimetres. The content in this document is mentioned for reference use only. Values may differ from current data. All chart lines are combined jib angles. For detailed information please contact Mammoet.

Main boom

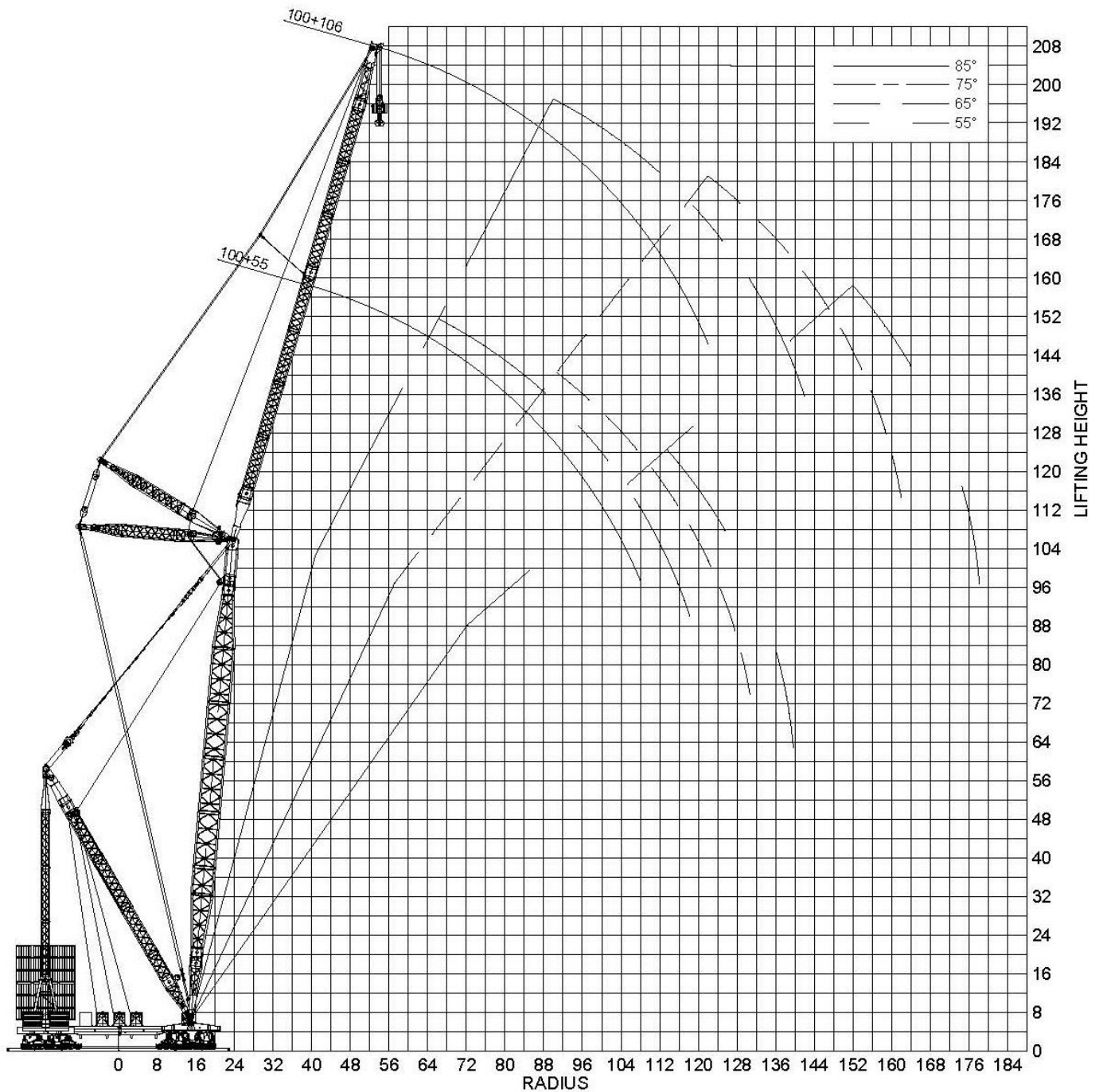
- Ring diameter: 29.8 + 39.4
- Boom head: 2x
- Ballast: 4000 t

Boom length (m)	Radius																											
	26.5	28	30	34	38	42	46	50	54	58	62	66	70	74	78	82	86	90	94	98	102	106	110	114	118	122	132	136
83	3200	3200	3200	3200	3200	3200	3127	2806	2498	2246	2036	1858	1705	1573	1457													
88		3200	3200	3200	3200	3200	3096	2794	2488	2236	2027	1849	1696	1564	1448	1344	1250											
94		3200	3200	3200	3200	3200	3060	2777	2471	2221	2011	1834	1682	1549	1434	1329	1234	1150										
100			3200	3200	3200	3200	3029	2764	2460	2210	2001	1824	1672	1540	1425	1320	1225	1140	1064	995								
105			3200	3200	3200	3200	2999	2753	2449	2200	1992	1815	1664	1532	1417	1312	1217	1132	1056	987	925	868						
111			3200	3200	3165	2966	2739	2436	2188	1980	1804	1653	1522	1407	1302	1208	1123	1046	977	915	857	805						
117			3200	3200	3081	2887	2715	2423	2176	1969	1794	1643	1512	1397	1294	1199	1113	1037	968	905	848	796	748					
123			3200	3134	2921	2725	2548	2388	2162	1957	1782	1632	1501	1387	1285	1189	1104	1028	958	896	839	787	738	694				
128			3200	2951	2733	2543	2375	2224	2088	1945	1771	1621	1491	1377	1276	1181	1096	1019	950	888	830	778	730	673	605			
134			3004	2752	2539	2354	2192	2046	1915	1825	1758	1609	1479	1366	1265	1171	1086	1010	941	877	820	766	698	632	572			
140			2785	2547	2344	2169	2014	1876	1751	1638	1603	1503	1410	1324	1243	1161	1076	998	923	851	783	718	654	595	535	400	346	

Dimensions are in millimetres. The content in this document is mentioned for reference use only. Values may differ from current data. All chart lines are combined jib angles. For detailed information please contact Mammoet.



Dimensions are in millimetres. The content in this document is mentioned for reference use only. Values may differ from current data. All chart lines are combined jib angles. For detailed information please contact Mammoet.



Dimensions are in millimetres. The content in this document is mentioned for reference use only. Values may differ from current data. All chart lines are combined jib angles. For detailed information please contact Mammoet.

Main boom with luffing jib

- Ring diameter: 29.8 + 39.4
- Boom head: 1x
- Ballast: 4000 t

Boom length (m)	Jib length (m)	Radius (m)																																	
		35.1	38	42	46	50	54	58	62	66	70	74	78	82	86	90	94	98	102	106	110	114	118	122	132	142	152	162	172	178.2					
83	47	1600	1600	1600	1600	1600	1600	1600	1600	1600	1600	1551	1428	1326	1227	1136	1054	979	909	843															
	55		1600	1600	1600	1600	1600	1600	1600	1600	1600	1535	1425	1324	1235	1142	1071	996	927	865	806	746													
	61			1600	1600	1600	1600	1600	1600	1600	1600	1535	1417	1313	1226	1158	1077	1013	942	878	827	764	709	657											
	66				1600	1600	1600	1600	1591	1581	1568	1455	1437	1399	1304	1206	1131	1062	1000	955	891	832	785	734	685										
	78					1535	1530	1494	1486	1453	1443	1430	1402	1388	1317	1230	1152	1080	1008	951	899	840	797	745	708	599									
	84						1456	1426	1422	1395	1389	1378	1355	1344	1323	1310	1224	1137	1068	1006	949	898	845	795	755	707	614	514							
	89							1355	1330	1326	1303	1296	1275	1266	1247	1236	1223	1208	1132	1065	1003	946	894	840	791	752	716	623	526						
	95								1245	1225	1222	1204	1198	1188	1173	1162	1148	1135	1123	1072	1000	943	891	844	791	749	713	621	539	450					
101									1149	1131	1127	1109	1103	1085	1076	1059	1049	1032	1020	1005	991	940	881	828	784	745	709	616	532	461	384				
106										1120	1096	1091	1065	1058	1033	1023	1011	980	964	932	915	880	863	810	756	719	685	598	526	472	393				
88	47		1600	1600	1600	1600	1600	1600	1600	1600	1600	1535	1421	1311	1220	1131	1048	972	903	838	759														
	55			1600	1600	1600	1600	1600	1600	1600	1600	1529	1418	1319	1215	1141	1059	990	924	859	800	742	672												
	61				1600	1600	1600	1600	1600	1600	1600	1516	1405	1308	1221	1144	1069	994	937	873	813	759	706	653											
	72					1600	1600	1545	1541	1426	1418	1410	1288	1280	1269	1168	1108	1042	981	926	873	824	785	739	693	571									
	78						1528	1491	1488	1480	1449	1439	1409	1398	1371	1301	1214	1137	1068	1006	949	885	838	788	742	703	598	484							
	84							1447	1419	1415	1389	1382	1358	1349	1336	1316	1295	1213	1135	1066	1004	936	883	837	794	741	705	612	512						
	89								1322	1318	1296	1288	1268	1258	1240	1228	1213	1199	1132	1062	1000	932	880	833	790	750	702	609	526	422					
	95									1239	1218	1214	1196	1190	1174	1165	1150	1139	1127	1114	1061	998	941	884	830	787	748	699	619	536	449				
101										1232	1213	1207	1190	1181	1162	1150	1134	1117	1103	1087	1057	985	924	873	826	783	743	697	616	535	461	380			
106											1112	1089	1084	1060	1052	1029	1019	992	977	945	930	899	884	845	801	762	725	687	592	529	459	392			
94	55			1600	1600	1600	1600	1600	1600	1600	1600	1513	1411	1305	1217	1127	1057	981	911	847	788	725	669	616											
	61				1600	1600	1600	1600	1600	1600	1600	1512	1402	1305	1216	1141	1060	997	927	872	813	758	705	652											
	66					1600	1600	1600	1600	1600	1600	1564	1563	1427	1385	1288	1203	1125	1051	989	939	870	827	771	719	669	539								
	72						1600	1600	1556	1550	1462	1463	1334	1333	1330	1221	1185	1110	1042	970	910	860	822	779	727	681	570								
	78							1519	1484	1481	1448	1442	1430	1402	1389	1364	1297	1211	1135	1059	991	936	885	825	782	737	688	593	481						
	84								1438	1410	1406	1381	1372	1350	1339	1318	1306	1288	1203	1120	1051	989	934	883	837	781	741	700	596	497	409				
	89									1314	1290	1287	1266	1259	1241	1231	1217	1202	1187	1117	1048	986	930	879	833	777	738	702	609	525	421				
	95										1324	1304	1297	1279	1268	1252	1238	1223	1208	1194	1128	1054	984	927	876	830	788	735	699	607	525	449	356		
101											1221	1203	1184	1179	1161	1152	1134	1122	1106	1091	1075	1042	981	924	872	818	770	730	695	606	536	459	379		
106												1103	1081	1076	1053	1044	1022	1011	985	970	940	924	896	880	852	809	760	711	673	598	521	459	393	306	
100	55			1600	1600	1600	1600	1600	1600	1600	1600	1509	1391	1290	1201	1113	1042	967	906	844	784	728	668	614											
	106												1098	1076	1070	1049	1039	1019	1006	982	951	937	908	894	865	837	793	752	713	677	586	519	460	387	305

Dimensions are in millimetres. The content in this document is mentioned for reference use only. Values may differ from current data. All chart lines are combined jib angles. For detailed information please contact Mammoet.