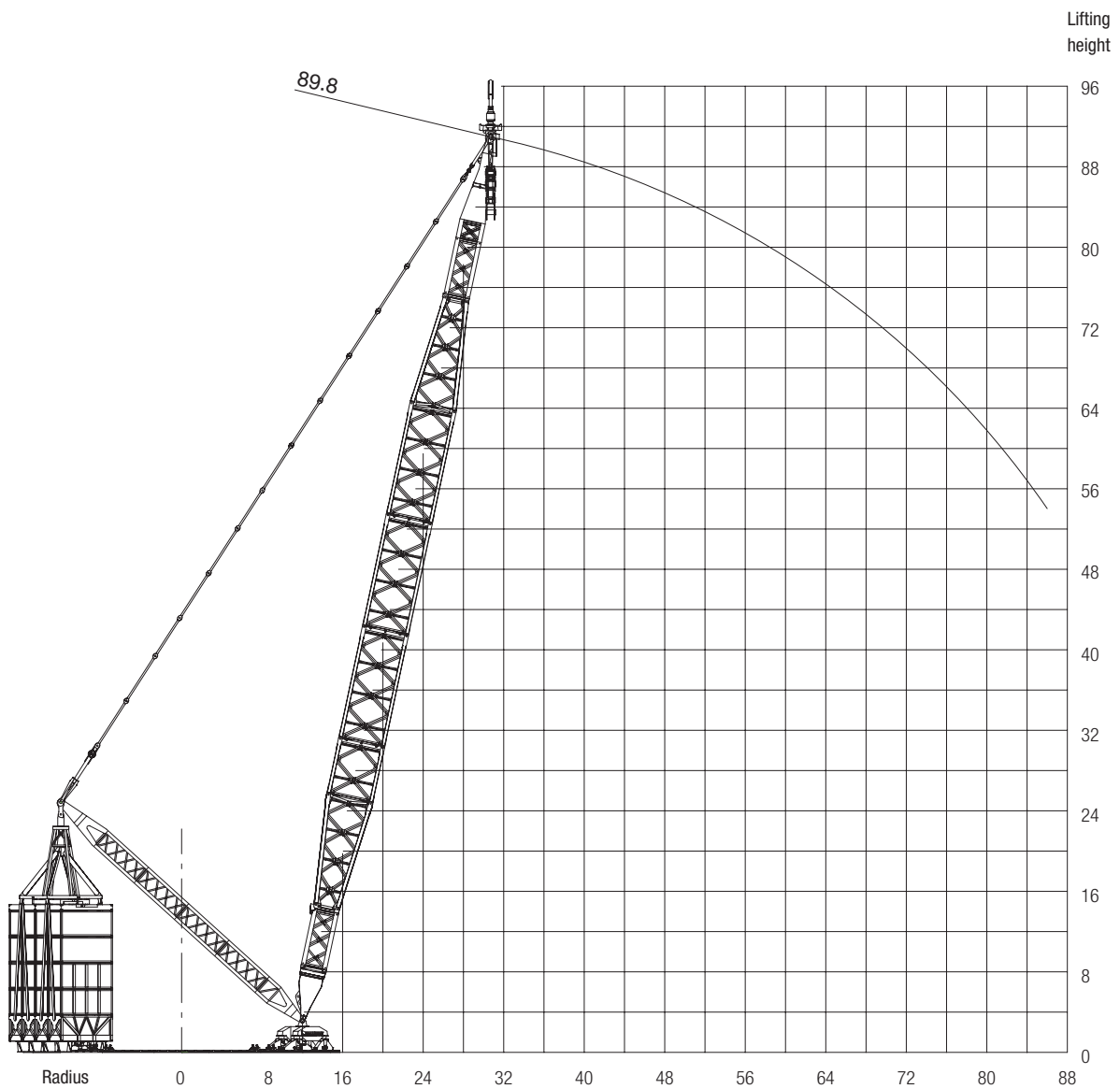


Dimensions are in millimeters.  
 The content in this document is mentioned for reference use only. Values may differ from current data. Always contact Mammoet for current project calculations.



Dimensions are in meters.  
 The content in this document is mentioned for reference use only. Values may differ from current data. Always contact Mammoet for current project calculations.

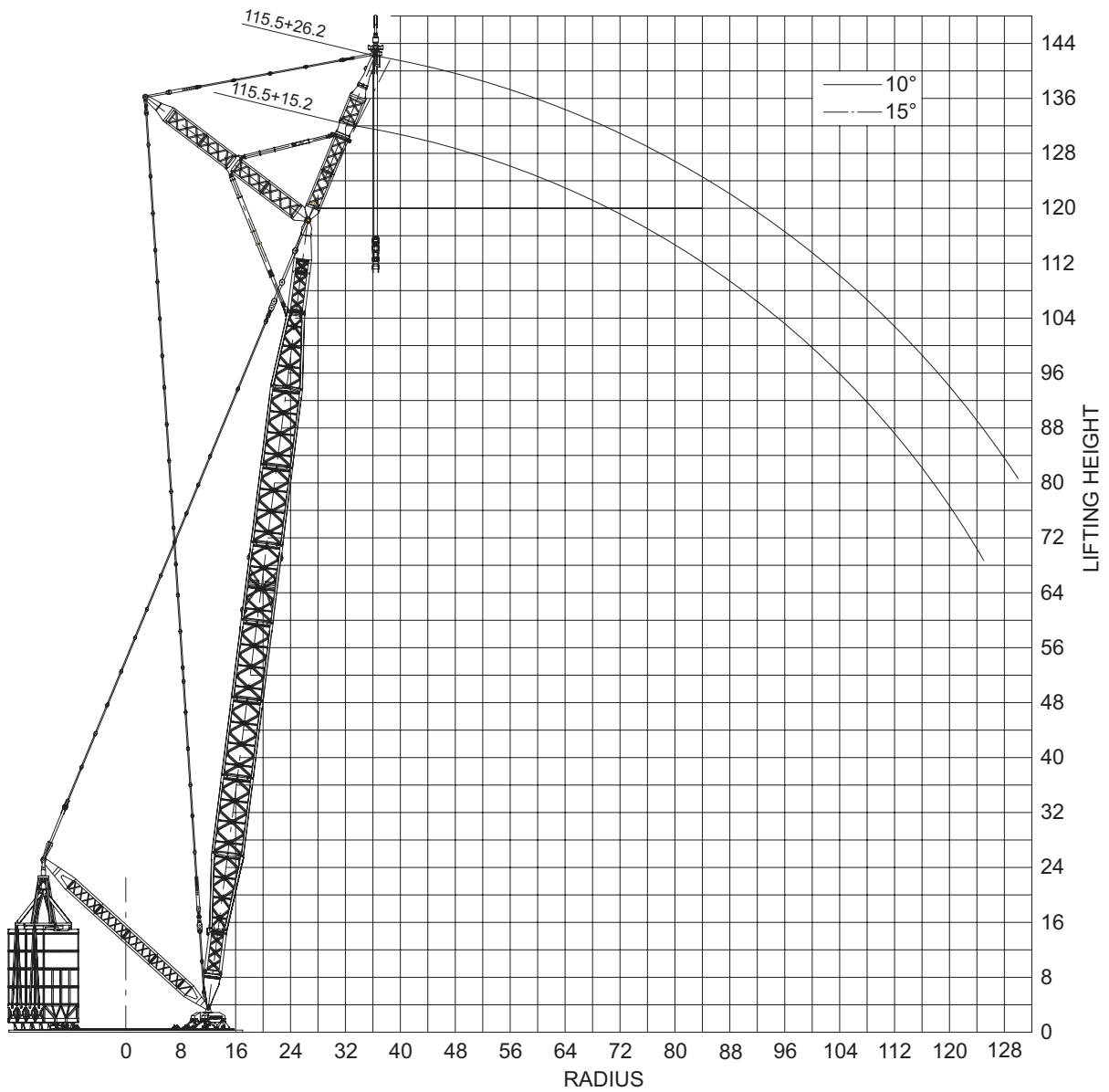
### Double-stacked main boom with superlift

- Ring diameter: 27.2 + 30.7 m
- Ballast: 2600 - 2050 t

Boom length (m)	Superl. ballast (t)	Radius (m)																			
		31	32	34	36	38	40	42	44	46	48	50	54	58	62	66	70	74	78	82	86
89.8	2050	1917	1778	1600	1470	1341	1231	1135	1050	977	910	851	749	665	594	534	482	436	396	361	329
	2350	2221	2063	1855	1681	1561	1435	1326	1229	1145	1069	1002	886	790	709	640	581	529	483	443	407
	2600	2384	2300	2071	1880	1718	1600	1484	1378	1285	1202	1128	999	894	805	729	663	606	556	511	471

t = metric tons.

The content in this document is mentioned for reference use only. Values may differ from current data. Always contact Mammoet for current project calculations.



Dimensions are in meters.  
The content in this document is mentioned for reference use only. Values may differ from current data. Always contact Mammoet for current project calculations.

**Double-stacked main boom with fixed jib, long strut (75°) and superlift**

- Ring diameter: 27.2 + 30.7 m
- Ballast: 2600 - 2050 t

Boom length (m)	Jib length (m)	Jib offset (°)	Superl. ballast (t)	Radius (m)																										
				29	30	34	38	42	46	50	54	58	62	66	70	74	78	82	86	90	94	98	102	106	110	114	118	122	130	
86.9	15.2	15	2050	2161	2024	1600	1317	1098	931	799	691	602	527	462	407	358	301	264	231	200	173	148	125							
			2350	2161	2165	1856	1537	1289	1100	949	827	726	641	569	506	451	388	346	308	274	243	215	189							
			2600	2161	2165	2072	1703	1448	1240	1075	941	830	737	657	588	529	475	428	386	348	314	281	252							
	26.2	15	2050			1631	1347	1126	956	822	713	622	546	481	425	376	333	294	260	229	201	175	151	129						
			2350			1803	1567	1317	1124	973	849	747	661	588	524	469	420	377	337	302	271	242	215	190						
			2600			1803	1733	1476	1265	1098	963	851	756	676	607	546	492	445	402	364	329	297	268	241						
104	15.2	15	2350			1828	1508	1260	1069	918	795	694	609	536	473	418	370	327	288	241	211	182	157	133	111	91				
			2600			2044	1673	1418	1209	1043	909	798	705	625	556	495	442	395	353	315	281	250	221	195	170	148				
			26.2	15	2600			1707	1449	1237	1069	933	821	726	644	575	514	460	412	369	331	296	265	235	209	185	162	140		
116	15.2	15	2600			1996	1655	1401	1191	1025	890	778	684	605	535	475	422	374	332	295	260	229	200	174	150	128	107	88		
	26.2	15	2600			1692	1433	1220	1051	915	801	706	625	555	494	440	392	349	310	276	244	215	189	164	142	120	101	65		

t = metric tons.

The content in this document is mentioned for reference use only. Values may differ from current data. Always contact Mammoet for current project calculations.