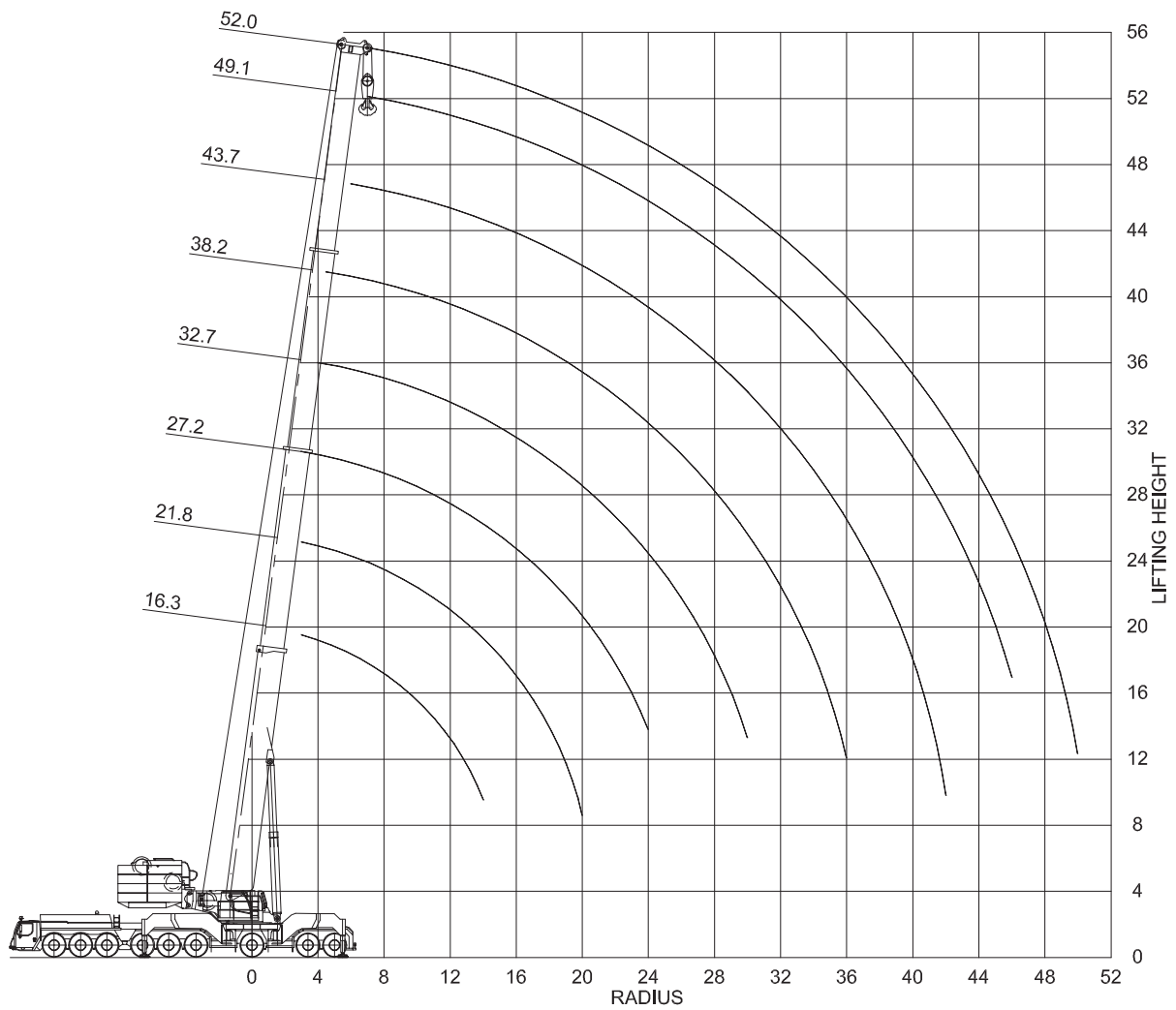
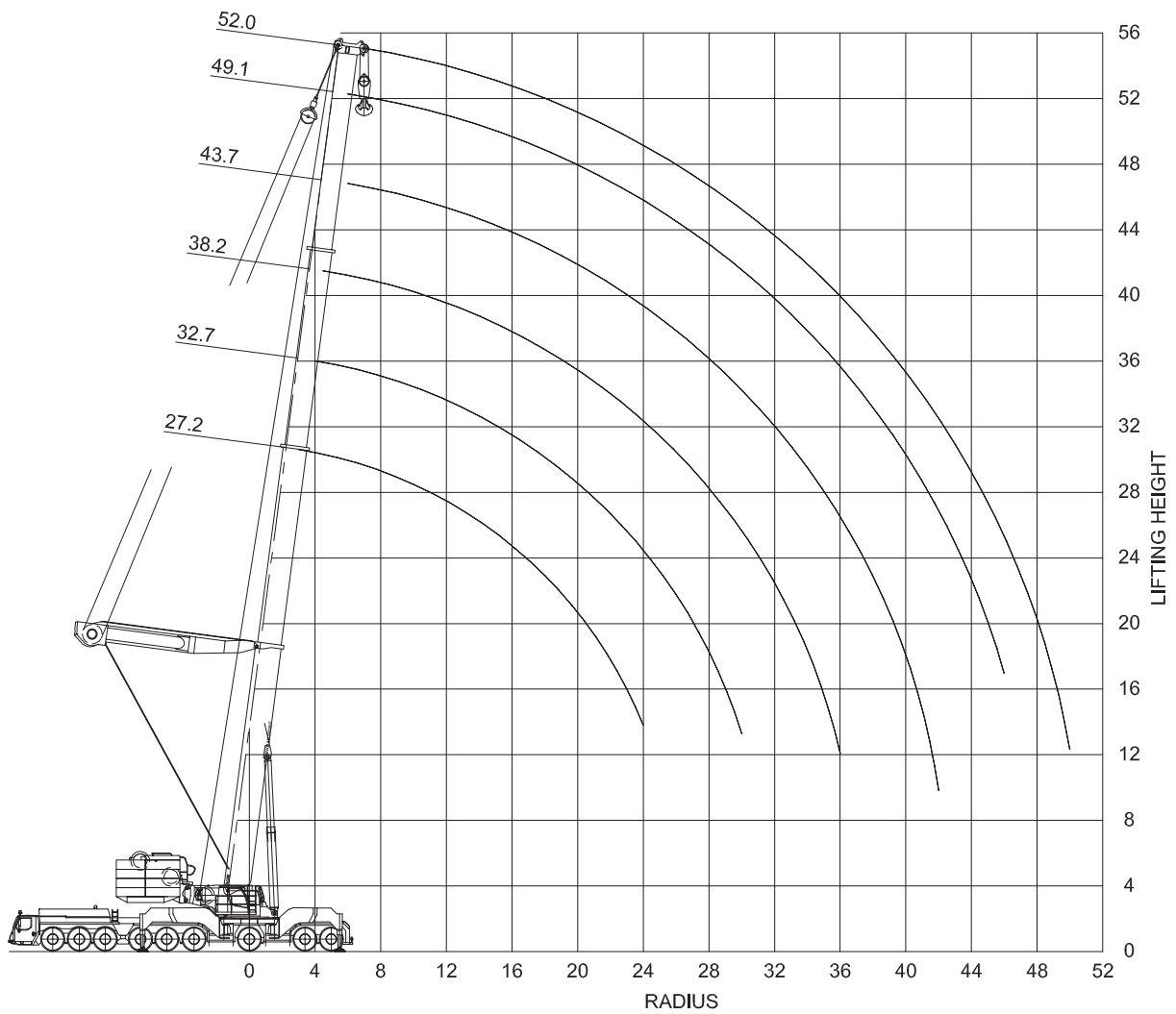


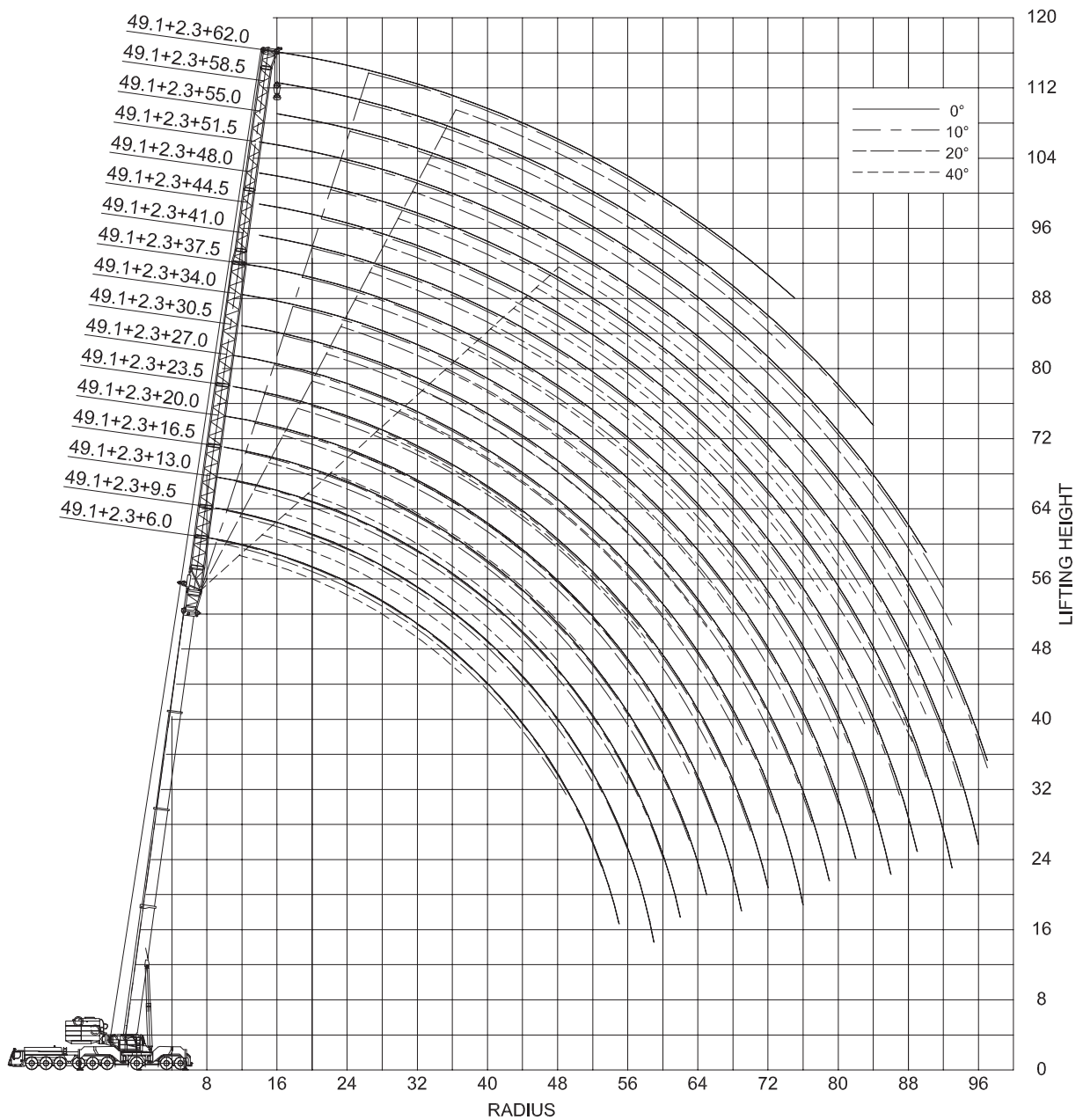
Dimensions are in millimeters.
The content in this document is mentioned for reference use only. Values may differ from current data. Always contact Mammoet for current project calculations.



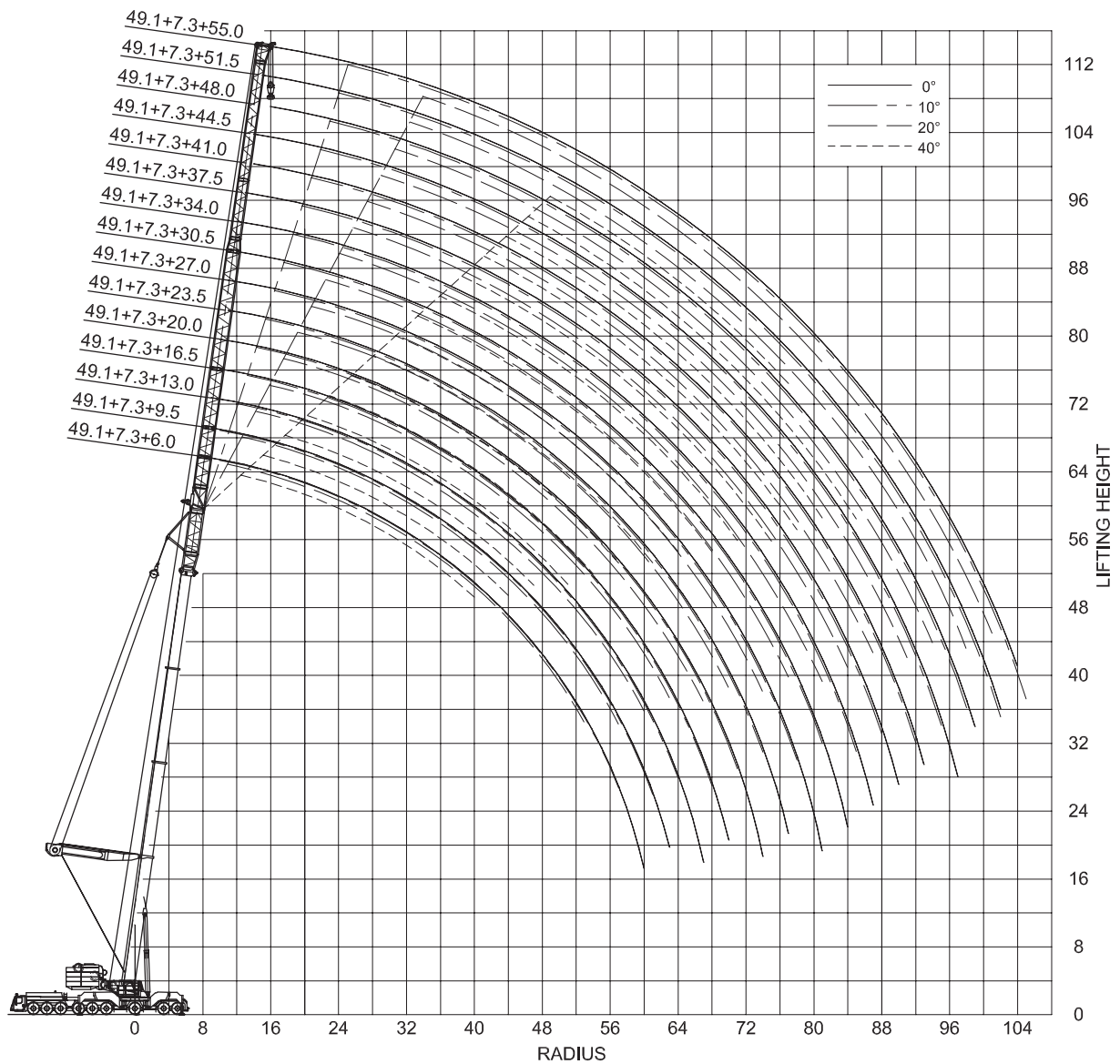
Dimensions are in meters.
 The content in this document is mentioned for reference use only. Values may differ from current data. Always contact Mammoet for current project calculations.



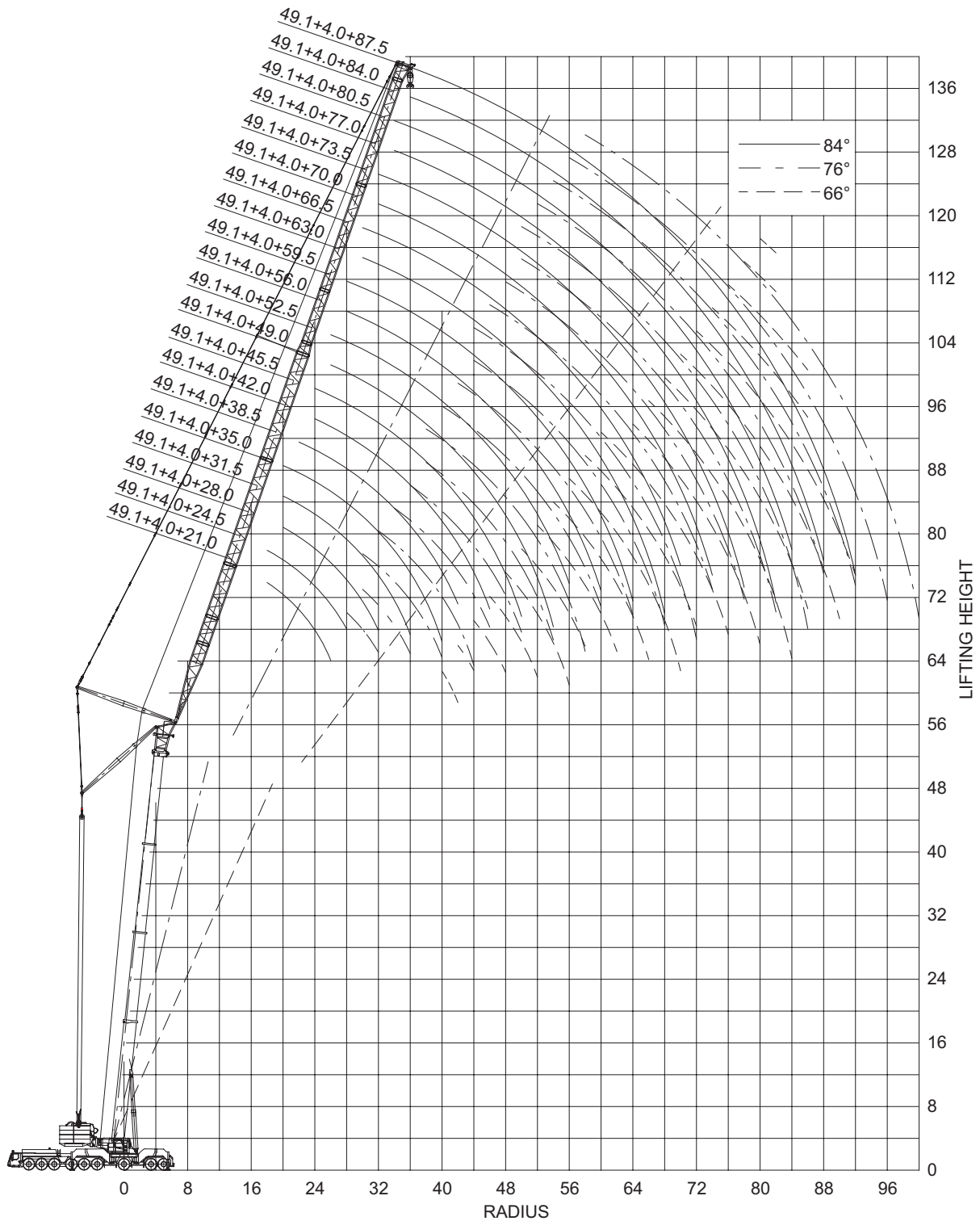
Dimensions are in meters.
The content in this document is mentioned for reference use only. Values may differ from current data. Always contact Mammoet for current project calculations.



Dimensions are in meters.
The content in this document is mentioned for reference use only. Values may differ from current data. Always contact Mammoet for current project calculations.



Dimensions are in meters.
 The content in this document is mentioned for reference use only. Values may differ from current data. Always contact Mammoet for current project calculations.



Dimensions are in meters.
The content in this document is mentioned for reference use only. Values may differ from current data. Always contact Mammoet for current project calculations.

Main boom with luffing jib

- Outrigger base: 12x12 m
- Ballast: 204 - 44 t
- Boom angle: 84°, 76°, 66°

Boom length (m)	Jib length (m)	Radius (m)																																
		14	16	18	20	22	24	26	28	30	34	38	42	46	50	54	58	62	66	70	74	78	82	86	90									
49.1	21			45.7	43.7	41.5	39.6	37.7																										
	24.5			42.7	41.3	39.7	37.9	36.2	34.7																									
	28				38	37	35.7	34.3	32.9	31.6																								
	31.5				35.2	34.5	33.6	32.6	31.5	30.3	28.1																							
	35				31.6	31.5	31.1	30.4	29.6	28.7	26.6	24.9																						
	38.5					28.8	28.7	28.2	27.6	26.9	25.3	23.6	22.2																					
	42						25.6	25.5	25.3	24.8	23.7	22.3	20.9	19.8																				
	45.5							23.3	23.2	23	22.9	22.2	21.2	20	18.8	17.9																		
	49								20.9	20.8	20.7	20.4	19.7	18.7	17.7	16.7	16																	
	52.5									19.5	19.4	19.2	18.9	18.3	17.7	16.8	15.9	15.1																
	56										17.5	17.4	17.1	16.8	16.2	15.6	14.9	14.1	13.4															
	59.5											16.1	15.9	15.7	15.5	15.1	14.6	14.1	13.4	12.8	12.2													
	63												14.2	14	13.8	13.6	13.3	12.9	12.4	11.8	11.3	10.8												
	66.5													12.9	12.7	12.5	12.3	12.1	11.9	11.5	11.1	10.6	10.1	9.7										
	70														11.4	11.2	11.1	10.9	10.7	10.4	10.1	9.7	9.2	8.8	8.5									
	73.5															10.2	10.1	9.9	9.8	9.7	9.5	9.2	8.8	8.5	8.1	7.8	7.5							
	77																8.8	9	8.8	8.7	8.6	8.5	8.3	8	7.6	7.3	7	6.7	6.5					
80.5																	7.6	7.8	7.9	7.7	7.5	7.3	7.1	7	6.9	6.7	6.4	6.1	5.9					
84																		6.4	6.4	6.3	6.1	5.9	5.7	5.6	5.6	5.6	5.6	5.4	5.2	4.9				
87.5																			5.5	5.4	5.2	5	4.9	4.7	4.6	4.6	4.6	4.6	4.6	4.5	4.4	4.2		
38.2	21		71.4	66.5	62.1	58.2	54.9																											
	24.5		68.5	64.4	60.3	56.6	53.3	50.4	48																									
	28			60.8	57.6	54.3	51.3	48.6	46.2	44.2																								
	31.5				57.3	55	52.4	49.6	47.1	44.8	42.7	39.3																						
	35					51.5	49.7	47.5	45.2	43.1	41.1	37.6	35.1																					
	38.5						47.7	46.4	44.9	43.1	41.3	39.5	36.3	33.6	31.8																			
	42							43.1	42	40.7	39.3	37.7	34.7	32.1	30	28.7																		
	45.5								39.4	39	38.1	37.1	35.9	33.4	30.9	28.8	27.2																	
	49									35.4	35.1	34.6	33.7	31.7	29.5	27.5	25.8	24.5																
	52.5										32.7	32.7	32.2	31.5	29.9	28.2	26.4	24.8	23.4	22.5														
	56											29.6	29.5	29.2	28	26.6	25	23.5	22.2	21.1	20.4													
	59.5												27	27	26.8	26.2	25.1	23.9	22.6	21.3	20.2	19.4	18.9											
	63													24.4	24.4	24.1	23.3	22.3	21.3	20.2	19.1	18.2	17.5	17.1										
	66.5														22.2	22.2	22.1	21.6	20.9	20	19	18.1	17.2	16.4	15.9	15.7								
	70															20.1	20	19.8	19.3	18.6	17.8	17	16.1	15.4	14.7	14.3	14.2							
	73.5																18.1	18	17.9	17.6	17.2	16.5	15.8	15.1	14.5	13.8	13.3	12.9						
	77																	16.2	16.1	16	15.7	15.2	14.6	14	13.5	12.8	12.3	11.8	11.6					
80.5																		14.7	14.5	14.5	14.3	14.1	13.6	13.1	12.5	12	11.5	11.1	10.7	10.5				
84																			13.3	13.2	13.1	12.8	12.6	12.4	12	11.6	11.1	10.6	10.2	9.8	9.6	9.4		
87.5																				11.9	11.8	11.7	11.5	11.2	11	10.7	10.5	10.2	9.8	9.4	9.1	8.8	8.6	8.5

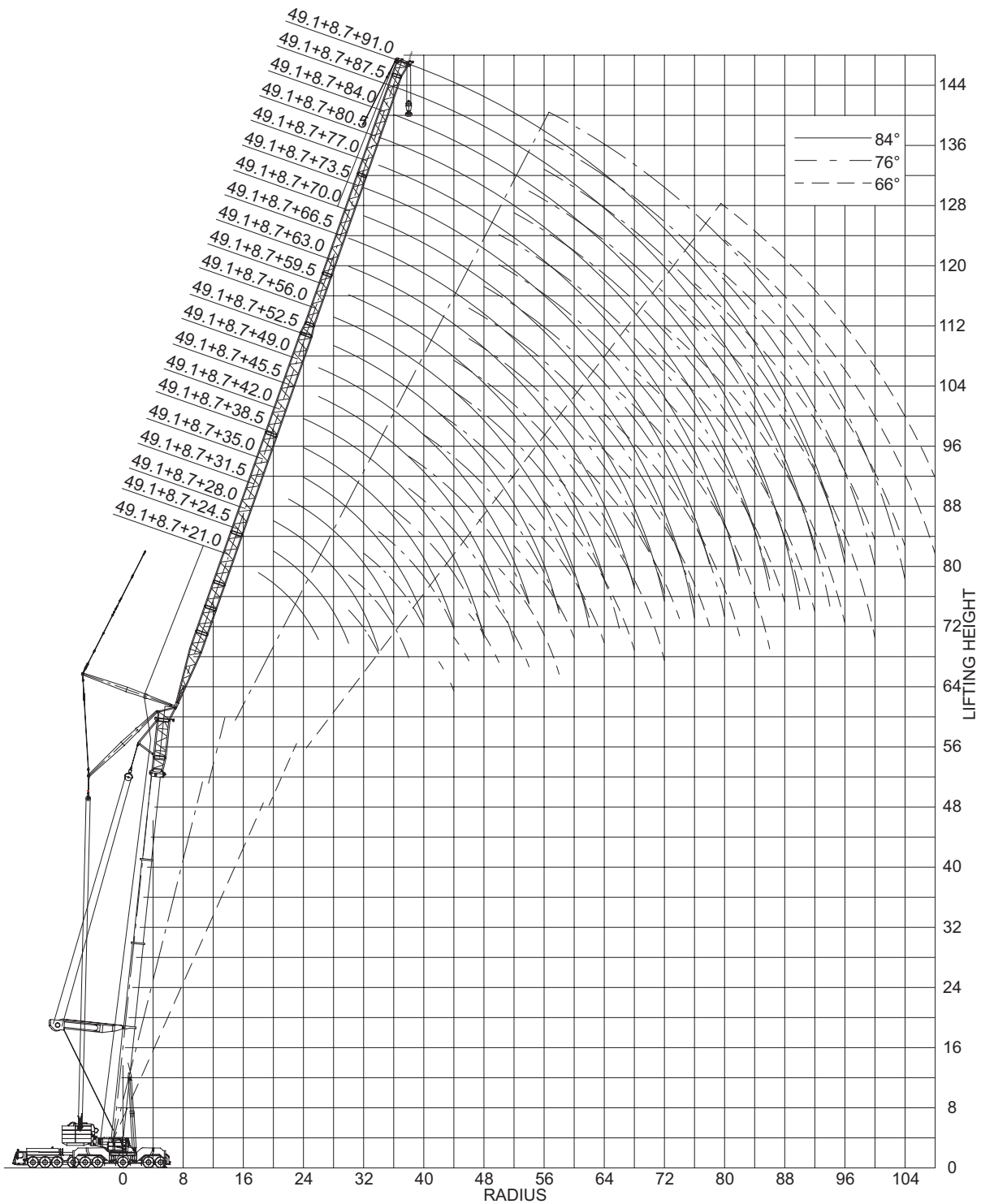
t = metric tons.

The content in this document is mentioned for reference use only. Values may differ from current data. Always contact Mammoet for current project calculations.

Boom length (m)	Jib length (m)	Radius (m)																													
		14	16	18	20	22	24	26	28	30	34	38	42	46	50	54	58	62	66	70	74	78	82	86	90						
27.2	21	123.8	116.8	108.2	102.2	98.5	89.1																								
	24.5	111.2	112	105.6	98.3	92.9	89.2	81.2																							
	28		99.8	98.2	95.3	90	85.7	82.1	76	69.6																					
	31.5		89.8	88.2	86.8	85.6	82.4	78.7	75.5	69.9	59.7																				
	35			79.4	78.2	77.1	76.2	74.8	72.3	69.5	59.6	51.9																			
	38.5			71.4	70.4	69.5	68.7	68	67	65.4	60.2	52.2																			
	42				63.7	62.9	62.1	61.5	60.8	60.2	56.9	51	45.4																		
	45.5				57.1	56.8	56.2	55.6	55	54.5	53.2	51.1	45.5	40.5																	
	49					51.1	51	50.4	49.9	49.4	48.6	47.1	44.5	40.4	36.3																
	52.5						46	45.9	45.8	45.4	45	44.3	43.6	42.6	40.8	36.6	31.7														
	56							41.4	41.3	41.3	40.9	40.2	39.8	39.1	38.2	36.5	33	27.5													
	59.5								37.3	37.2	37.1	37	36.6	36.1	35.7	35.1	34.6	32.9	29.6	24.3											
	63									33.6	33.4	33.4	33.1	32.7	32	31.2	30.5	29.8	29.3	26.1	21.2										
	66.5										30.5	30.3	30.2	30	29.8	29.3	28.6	28	27.4	27	26.2	23.2									
	70											27.5	27.4	27.2	27	26.7	26	25.4	24.8	24.3	23.8	23.3	20.4								
	73.5												24.8	24.6	24.3	24.1	23.8	23.3	22.8	22.3	21.9	21.6	21.4	20.6	18.1						
	77													22.3	22	21.8	21.6	21.4	21	20.6	20.2	19.8	19.5	19.3	18.3	16					
	80.5														20.3	20	19.7	19.5	19.1	18.5	18	17.4	16.9	16.4	16	15.6	15.5	14.1			
	84															18.1	17.8	17.6	17.4	16.9	16.4	15.9	15.4	14.9	14.4	14	13.7	13.5	12.3		
	87.5																16.2	15.8	15.2	14.7	14.2	13.8	13.4	13	12.7	12.4	12.1	12	11.9	11.5	10.8

t = metric tons.

The content in this document is mentioned for reference use only. Values may differ from current data. Always contact Mammoet for current project calculations.



Dimensions are in meters.
 The content in this document is mentioned for reference use only. Values may differ from current data. Always contact Mammoet for current project calculations.

Guyed main boom with luffing jib

- Outrigger base: 12x12 m
- Ballast: 204 - 54 t
- Boom angle: 84°, 76°, 66°

Boom length (m)	Jib length (m)	Radius (m)																													
		14	16	18	20	22	26	30	34	38	42	46	50	54	58	62	66	70	74	78	82	86	90	94							
49.1	21			100.6	94.7	89.3	79.1																								
	24.5				91.1	86.3	77.8	69.7																							
	28				89.7	84.8	76.3	68.8	61.6																						
	31.5					82.1	74.2	67.3	61.3																						
	35						71.8	65.5	59.8	54.7																					
	38.5							68.4	63.9	58.6	54.2	49.9																			
	42							62	60.6	56.7	52.4	48.9	45																		
	45.5								56.2	55.1	54	50.7	47.4	44.5	40.4																
	49									51.3	50.3	49.4	48.4	45.7	42.9	40.1	36														
	52.5										45.9	45.2	44.6	43.9	41.4	39.3	36.3	32.7													
	56											42	41.3	40.7	40.3	39.2	37.3	35.6	32.6	29.5											
	80.5												15.8	17.5	20.3	20	19.4	18.8	18.1	17.6	17	16.5	16	15.7	15.5	15.2					
	84													14.6	16.7	18.3	17.7	17.1	16.6	16	15.5	15	14.5	14.1	13.7	13.6	13.2				
87.5														12.6	13.4	15	14.8	14.3	13.9	13.4	13	12.7	12.4	12.2	12	11.8	11.3				
91															11.1	11.8	12.6	13.5	13.1	12.7	12.3	11.9	11.5	11.2	10.8	10.4	10.1	9.9	9.8		
38.2	21		115.1	108.1	100.8	93																									
	24.5			103.9	98.2	93.1	80.3																								
	28				102.3	96.6	91.4	79.4	69.7																						
	31.5					92.5	88.2	79.7	70.2	62.6																					
	35						83.8	82.4	76.8	70.1	62.8	55.2																			
	38.5							74.7	72.6	69	61.9	56	49																		
	42								67.9	66.1	64.5	60.8	54.9	48.5	43.1																
	45.5									60.1	58.6	57.6	53.9	48	42.5	38															
	49										54.7	53.4	52.3	50.6	47.3	42.5	37.9														
	52.5											50	48.8	47.9	47.2	46.1	42.9	38.2	34.4												
	56												45.6	44.6	43.7	43	42.4	41	37.6	33.8	30.5										
	80.5													20.7	21.2	21.5	20.8	20.1	19.4	18.7	18	17.4	16.9	16.4	16	15.8					
	84														18.3	18.9	19.2	19	18.4	17.7	17.1	16.5	15.9	15.3	14.8	14.3	14.1	13.8			
87.5															16.1	16.2	15.8	15.3	14.8	14.2	13.8	13.4	13	12.7	12.5	12.3	11.8	11.5			
91																14.5	14.6	14.6	14.2	13.7	13.2	12.8	12.4	12	11.7	11.5	11.1	10.8	10.6	10.6	
27.2	21	127.3	119.4	112.1	105.2	98.5																									
	24.5		114.7	108.4	102.5	96.5	82.4																								
	28			110.5	106.6	100.7	94.6	84.4	70.2																						
	31.5				97.5	95.3	92.8	82.7	70.5	60																					
	35					87.5	86.5	84.8	80.2	70.5	59.9	52																			
	38.5						78	77.1	74.6	71.1	60.9	52.7	46.5																		
	42							69.9	70	67.9	65.7	60	52.2	45.9																	
	45.5									62.1	61.7	60	58.5	52.2	45.8	40.7															
	49										54.8	55.6	54.6	53.4	50.6	45.9	40.7	36.5													
	52.5											50.1	50	49	48.2	46	41.1	36.8	33.1												
	56												44.6	45	44.6	43.9	43.2	40.6	36.4	32.7	29.3										
	80.5													21.3	21.1	20.7	20.3	19.9	19.4	18.8	18.2	17.6	17	16.5	16.2	15.3					
	84														19.1	19.2	18.8	18.4	18	17.7	17.2	16.7	16.1	15.4	14.9	14.5	14.2	13.4			
87.5															16.4	16	15.6	15.3	14.9	14.6	14.2	13.9	13.5	13.2	12.9	12.6	12.4	11.8	11.4		
91																14.9	14.8	14.4	14	13.7	13.4	13.1	12.8	12.5	12.2	11.9	11.6	11.2	11	10.8	10.2

t = metric tons.

The content in this document is mentioned for reference use only. Values may differ from current data. Always contact Mammoet for current project calculations.